



**MSME**

Laboratoire Modélisation  
et Simulation Multi Echelle



*Navier*

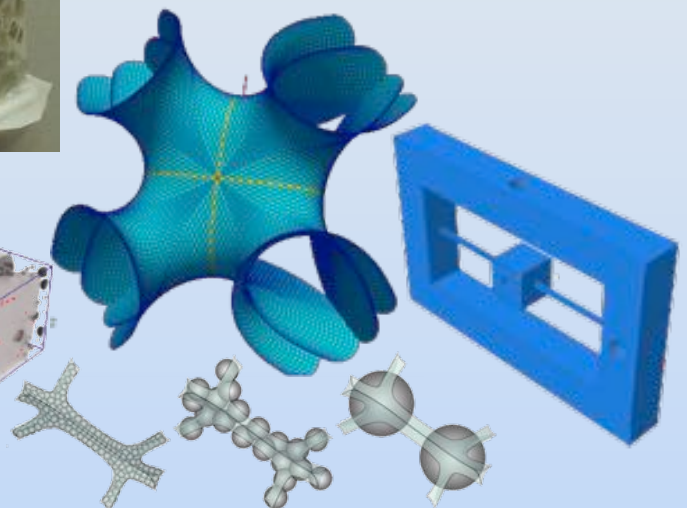
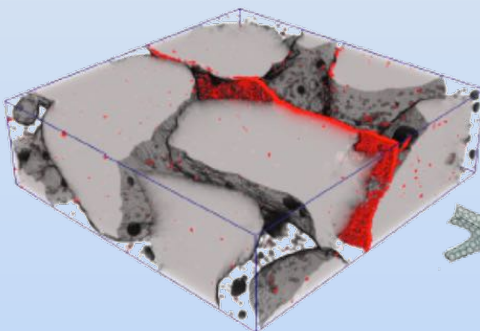
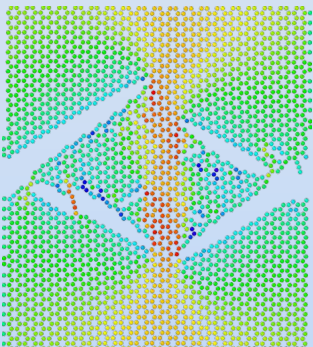
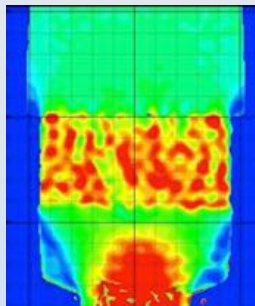
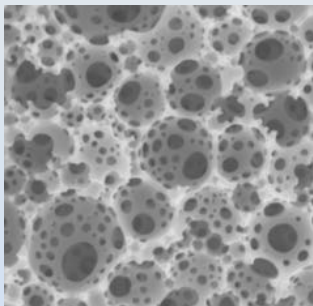


**CERMICS**

École des Ponts  
ParisTech

**Atelier  
Bilan et Perspectives  
2016**

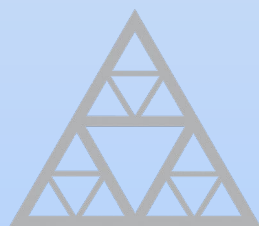
**École des Ponts ParisTech  
Amphithéâtre Cauchy  
19 septembre 2016**



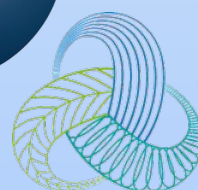
UNIVERSITÉ  
PARIS-EST CRÉTEIL  
VAL DE MARNE



UNIVERSITÉ  
PARIS-EST  
MARNE-LA-VALLÉE



École des Ponts  
ParisTech



**ESIEE**  
PARIS

**IFSTTAR**